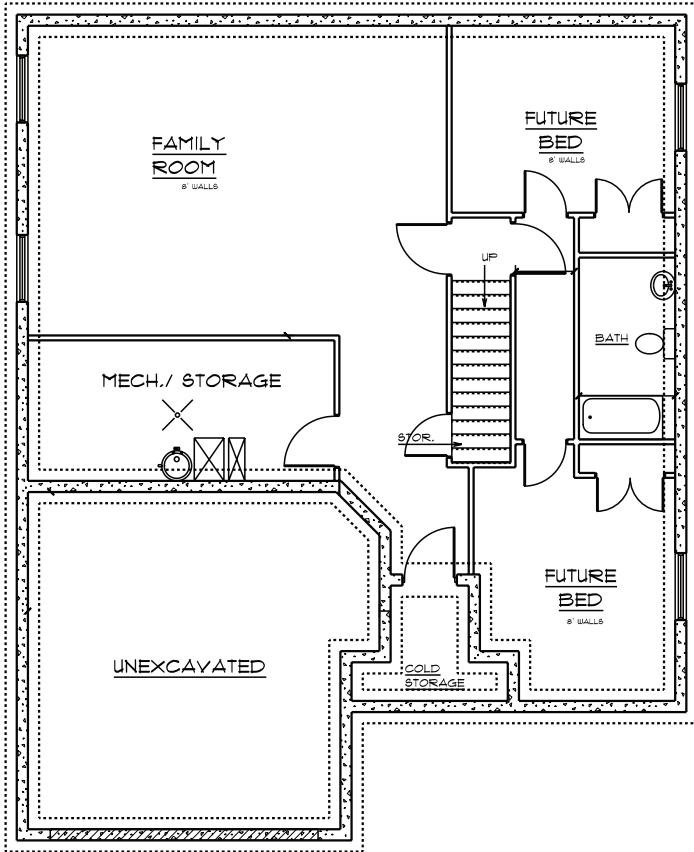


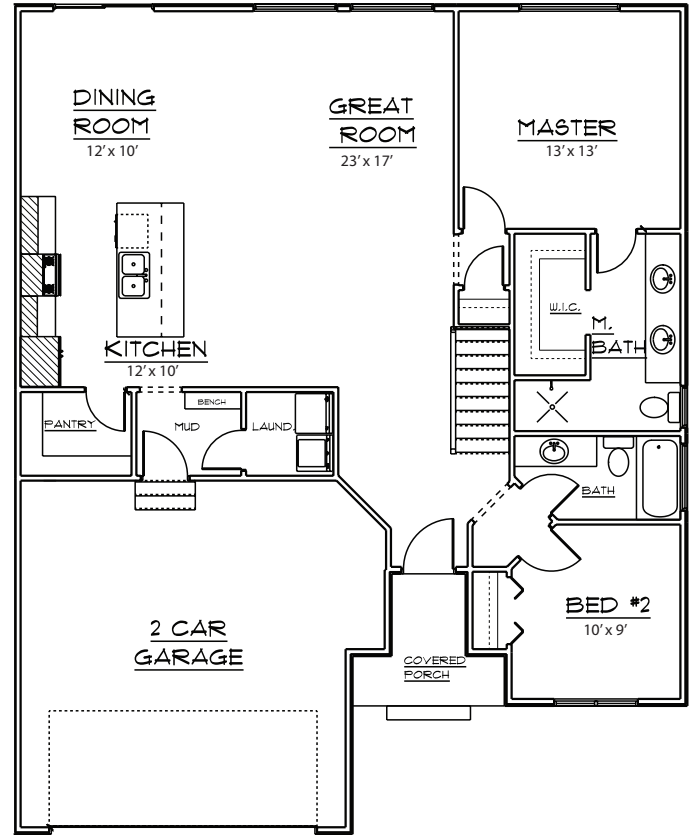
# ABIGAIL

Finished Sq. Ft 1365 - Total Sq. Ft: 2730  
Beds 2 - Baths 2 - Width 40 ft.- Depth 49 ft.

BASEMENT



MAIN FLOOR



## OQUIRRH MOUNTAIN RANCH



THE  
BUILDING GROUP

[www.rdmurah.com](http://www.rdmurah.com)