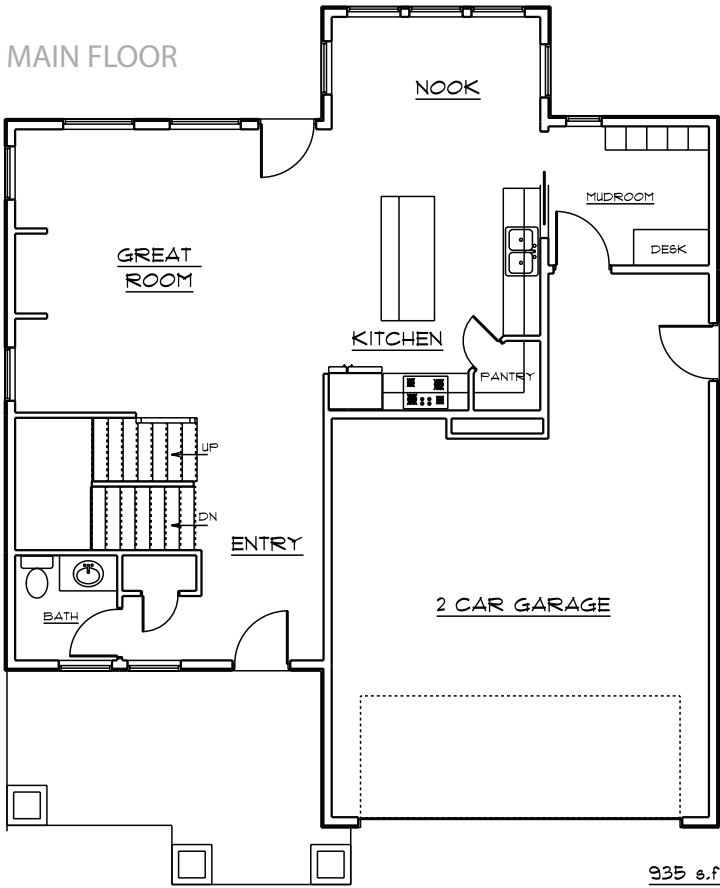


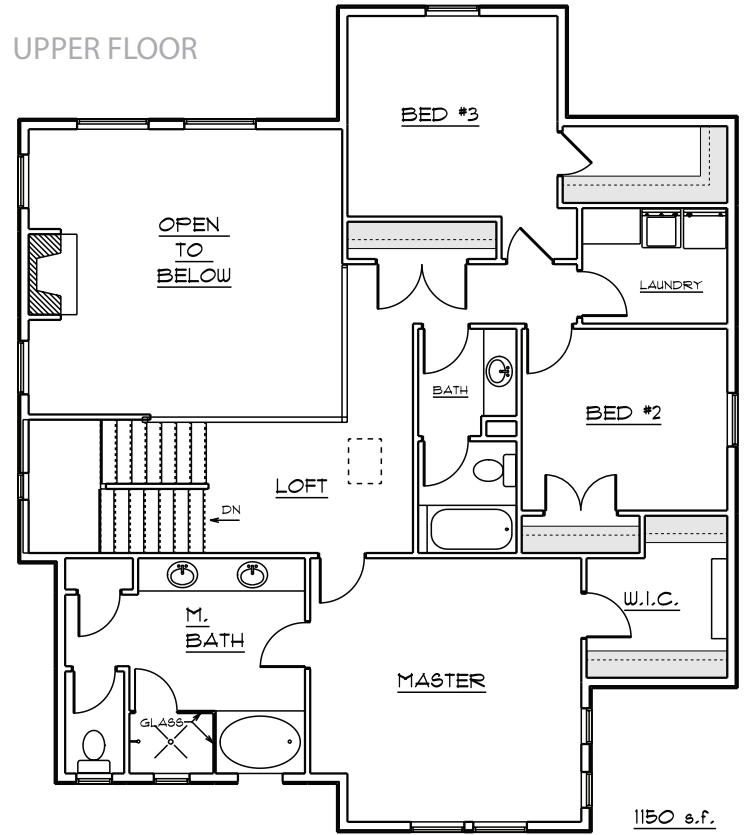
# DONOVAN

Finished Sq. Ft 2085 - Total Sq. Ft: 3218  
Beds 3 - Baths 2.5 - Width 40 ft.- Depth 46 ft.

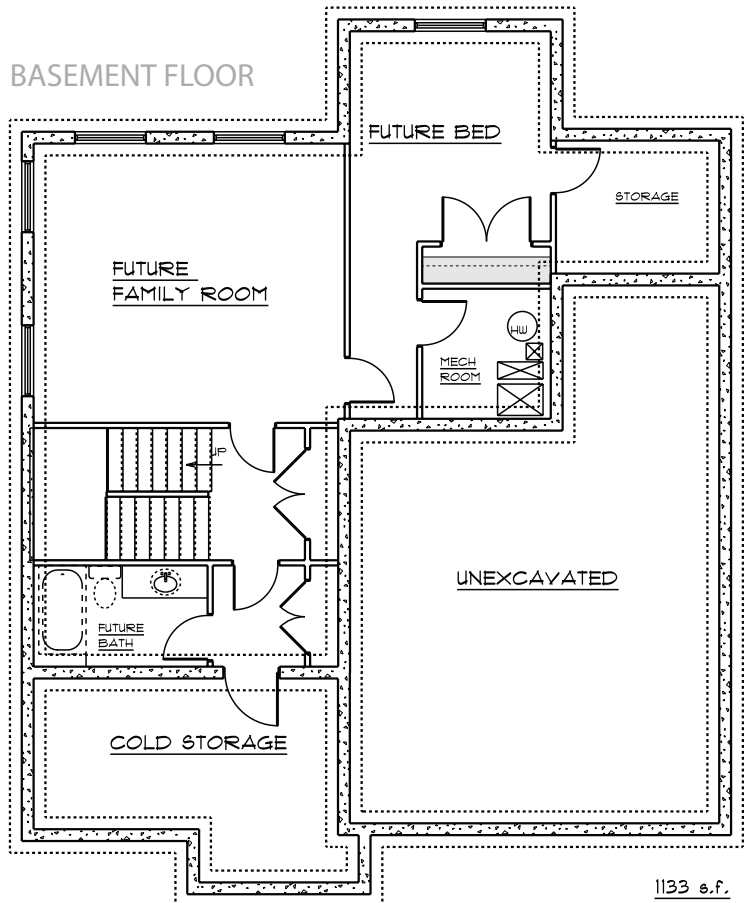
MAIN FLOOR



UPPER FLOOR



BASEMENT FLOOR



OQUIRRH MOUNTAIN RANCH



THE BUILDING GROUP

www.rdmurah.com