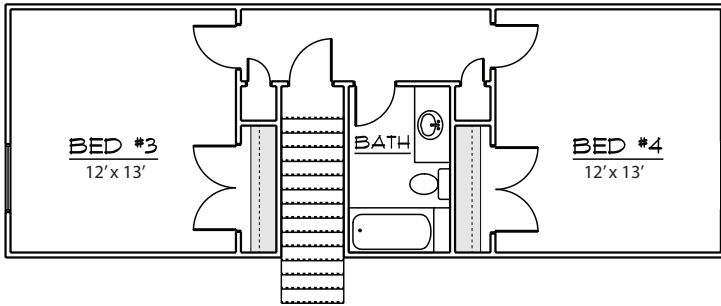


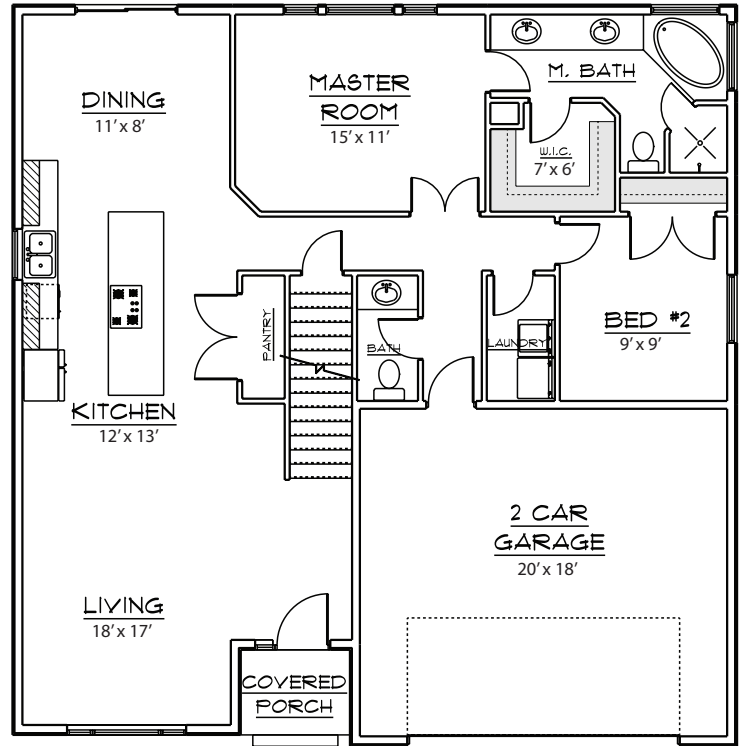
# MASIE

Finished Sq. Ft 1800 - Total Sq. Ft: 3040  
Beds 4 - Baths 2.5 - Width 40 ft.- Depth 40 ft.

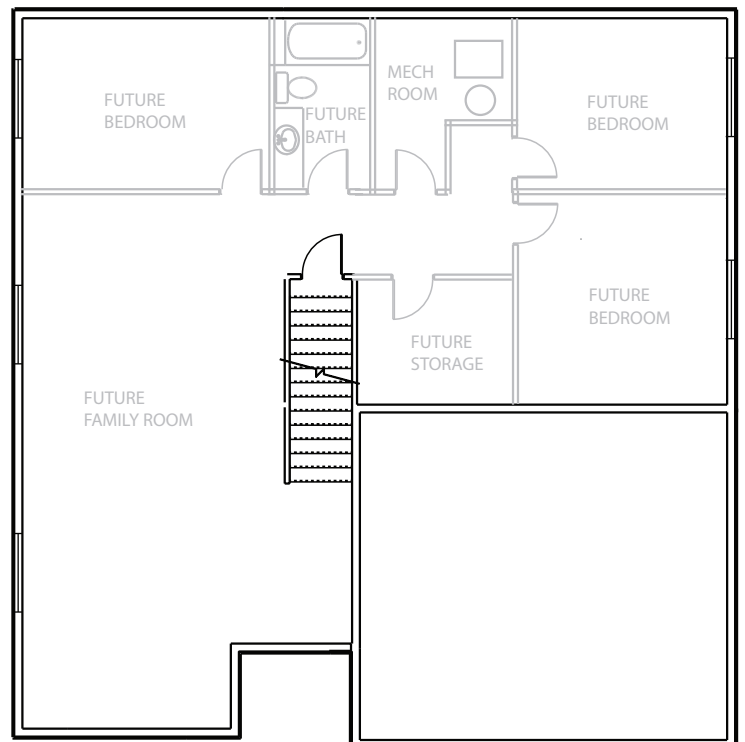
UPPER FLOOR  
560 sq ft



MAIN FLOOR  
1240 sq ft



BASEMENT FLOOR  
1240 sq ft



OQUIRRH MOUNTAIN RANCH



THE  
**BUILDING GROUP**

[www.rdmurah.com](http://www.rdmurah.com)